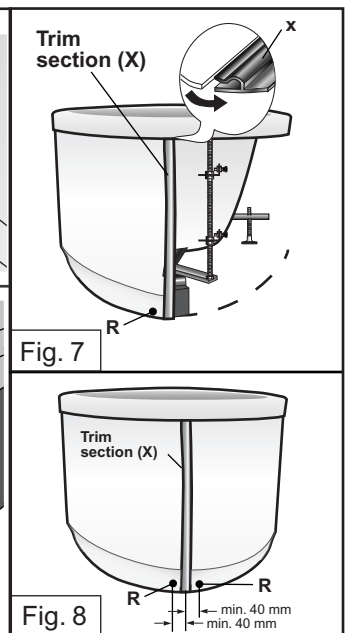
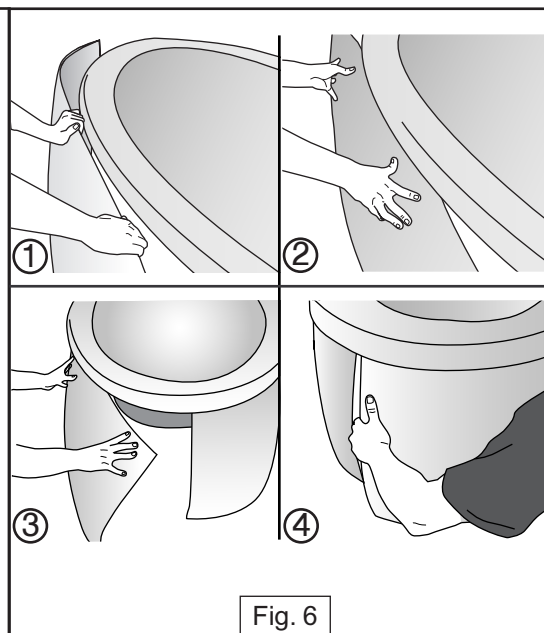
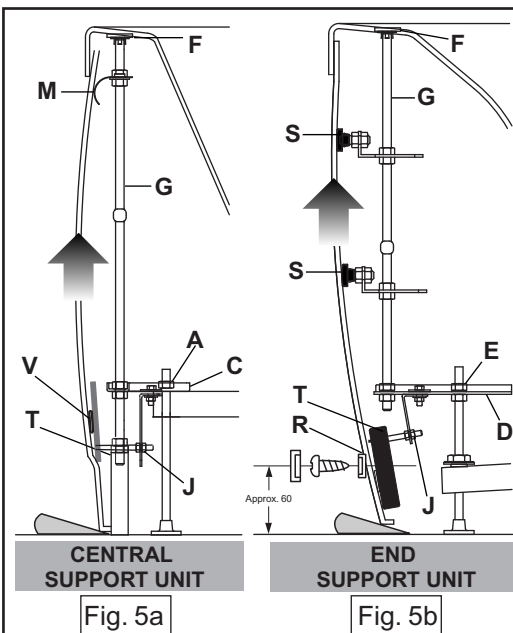
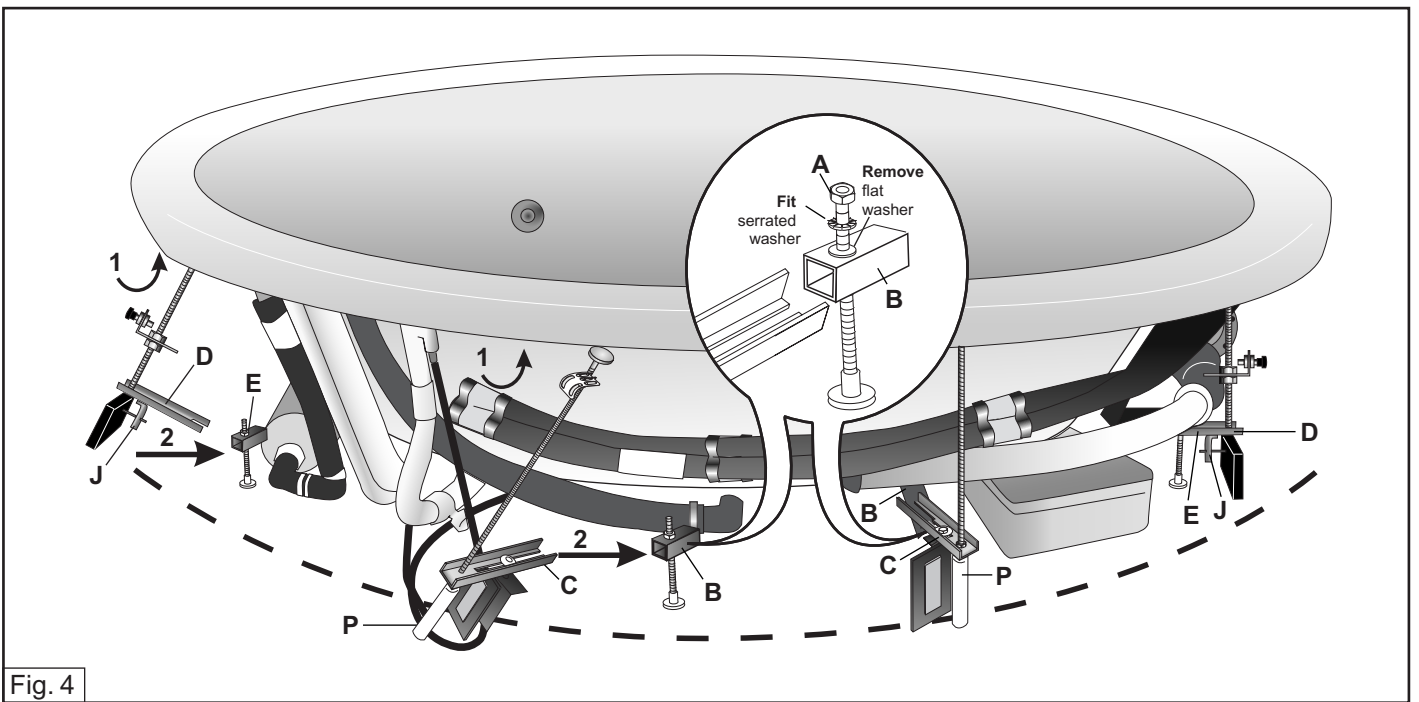
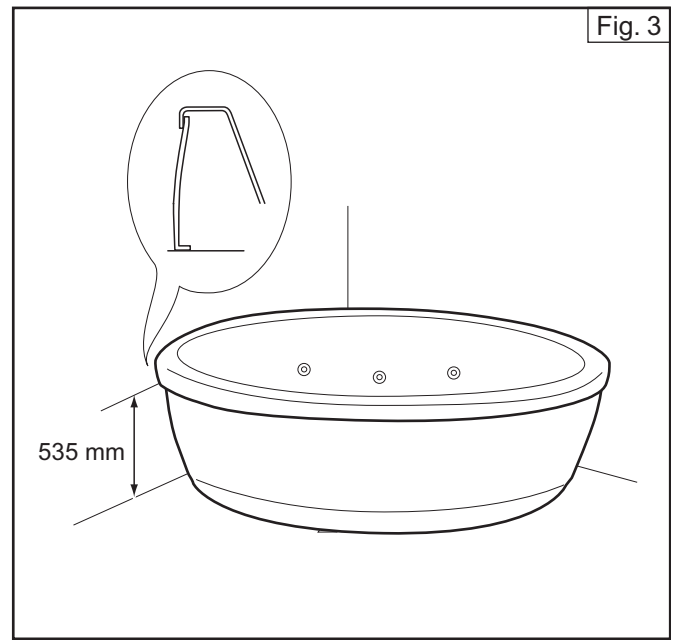
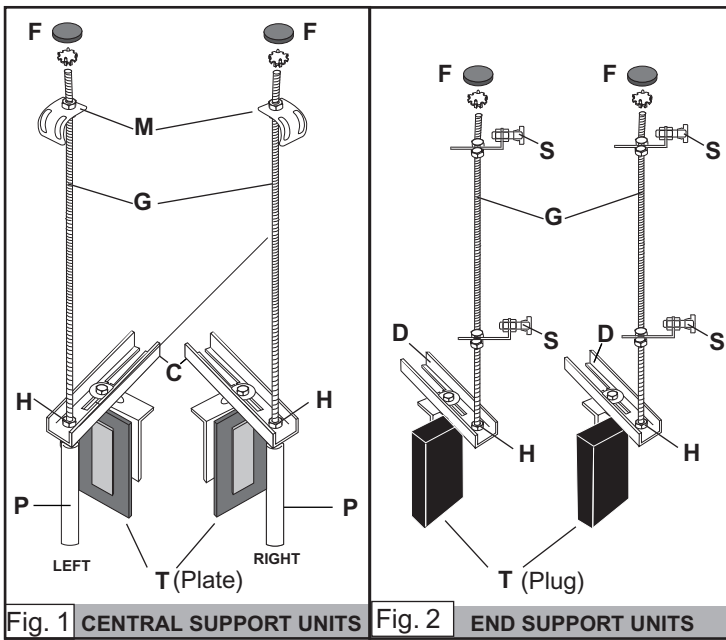

Front panel

GEORGIA



TABLE OF CONTENTS

1. DESCRIPTION OF MATERIAL	5
2. PREPARING THE BATHTUB	5
3. ASSEMBLING THE FOUR SUPPORTS FOR THE FIRST PANEL	6
3.1. Central support units	6
3.2. End support units	8
4. ASSEMBLING THE FIRST PANEL	10
5. ASSEMBLING THE SECOND PANEL	11



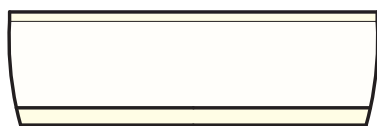
Congratulations on your choice and thank you for purchasing the Georgia panelled bathtub by Roca.

This manual is a basic guide for correct installation. Besides this manual, you should also consult the Georgia bathtub User and Installation Manuals for complete installation.

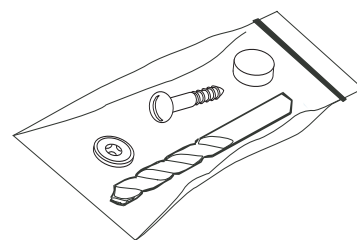
1. DESCRIPTION OF MATERIAL

Once you have unpackaged the panel, check that you have received the following material for each panel:

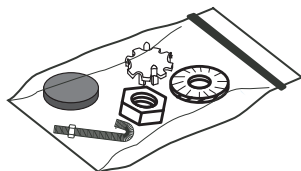
- Panel
- 2 assembled central support units (fig. 1)
- 2 assembled end support units (fig. 2)



- Bag of nuts and bolts containing:
 - 2 screws
 - 2 washers
 - 2 cap nuts
 - 1 bit



- Bag of nuts and bolts containing:
 - 4 M10 nuts
 - 6 serrated washers
 - 4 upper rod supports
 - 4 support plates
 - 2 stops with nut



- 2 chrome joint sections



2. BATHTUB PREPARATION

Check that all the perimeter of the bathtub is level and set at a height of 535 mm from the floor to the lower edge of the tub rim. (Figure 3)

If necessary, adjust the tub using the six legs. The tub rests on the floor by means of the legs of two transverse levelling crosspieces and one central crosspiece.

3. ASSEMBLING THE 4 SUPPORTS OF THE FIRST PANEL

Ensuring you do not alter the level, remove the upper locknuts (A) and the flat washer on the rods that form part of the tub legs (B). Then place the supplied serrated washer and screw the nut back on, leaving a space between the levelling crosspiece of the legs and the serrated washer with the nut, so that the panel support units (C) can be later fitted (see figure 4, close-up of the central unit).

3.1. CENTRAL SUPPORT UNITS.

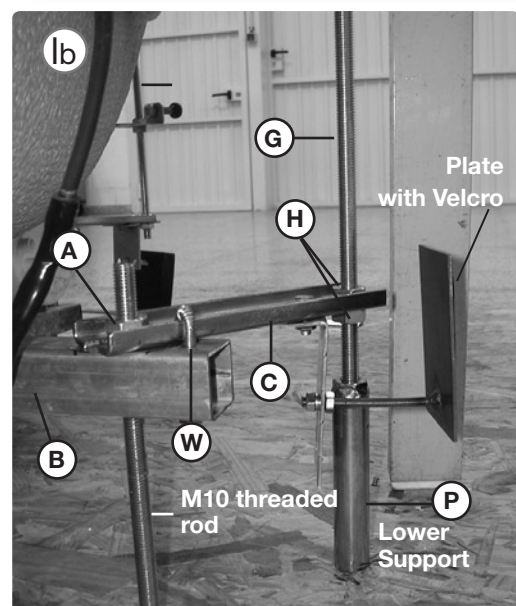
Following figures 1, 4 and 5a, fit the unit placing the horizontal support swivel (C) on the threaded rod of the leg (M10) between the serrated washer (added previously) and nut (A) and the levelling crosspiece (B) (fig. 4 Central unit close-up).

Important! Before directly fitting the swivel piece (C) to the (M10) threaded rod, fit the upper end of the unit (figure 1), adjusting the threaded rod (G) so that it is tight against the inside edge of the tub, together with the upper support and its support plate (F). This can be achieved easily by turning the rod (G). Tighten the nuts (H) and the nut (A). Adjust the lower plate (P) until it is firmly set on the floor. Ensure at all times not to lift the tub when tightening the nuts and that the rod (G) is vertical to the floor.

I →



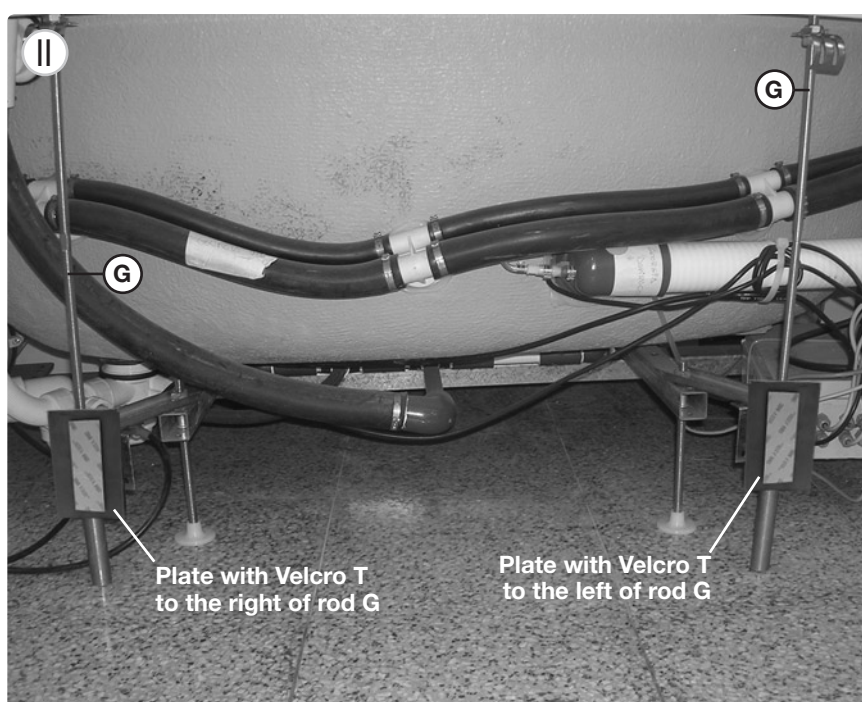
Ib →



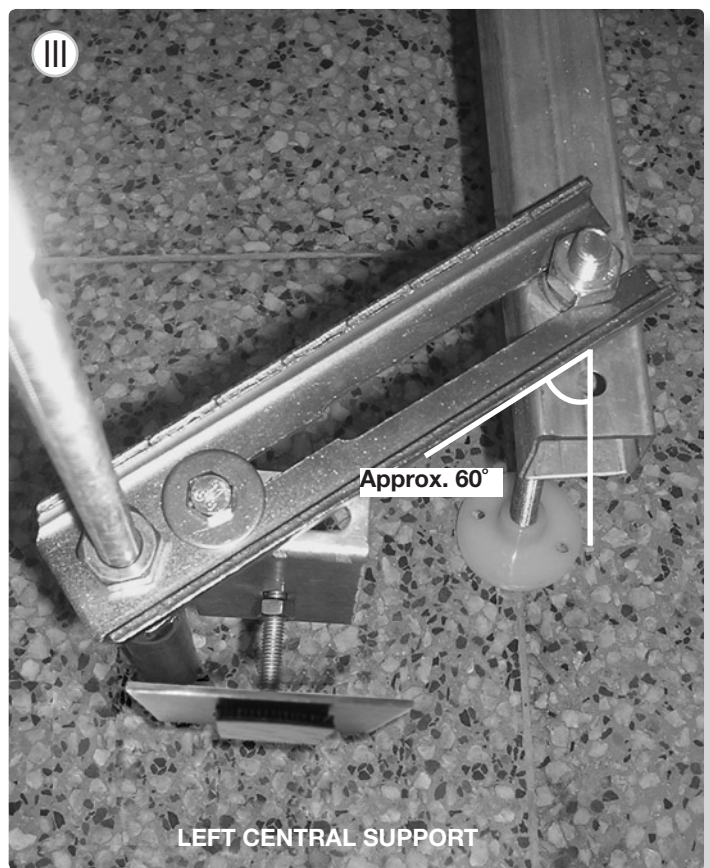
Important!

The right support must be turned towards the right and the left support to the left, in such a way that the plates with the Velcro are parallel to the lower curve of the panel for support (see photos II, III and IV).

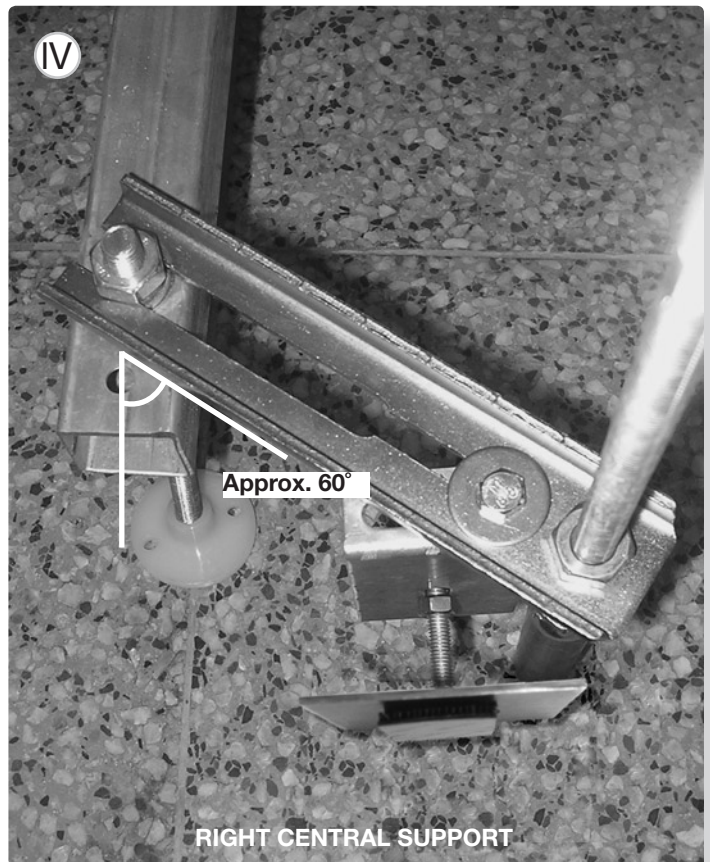
II →



The left central support shall be seated approximately 60° to the left in relation to the bathtub leg (see photo III).



The right central support shall be seated approximately 60° to the right in relation to the bathtub leg (see photo IV).



Once the fittings are at the correct angle, place the stop (W) as shown in photo V and Ib. Put the long part of the stop through the hole in the crosspiece (B) and, with the short end of the stop, fasten the edge of the horizontal support (C). Fasten the nut below the crosspiece to avoid the horizontal support from turning. The bottom plate will be at approximately 15-20 mm inwards from the vertical plane of the bathtub edge. Adjust the height of the plate using the swivel unit of the J support so that the plate is above the bottom fold of the panel (see photo V).

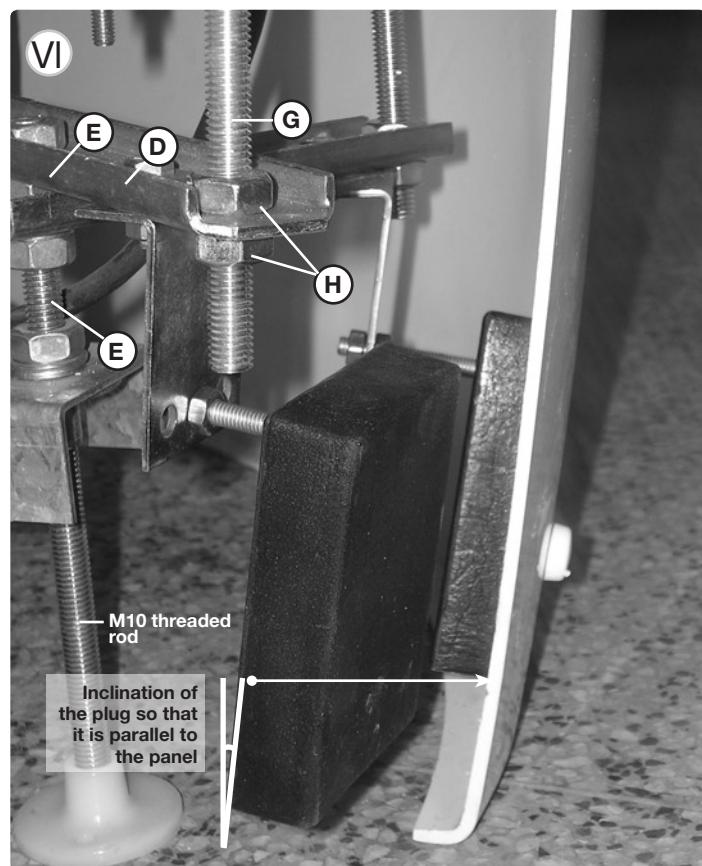
V →



3.2. OUTER SUPPORT UNITS

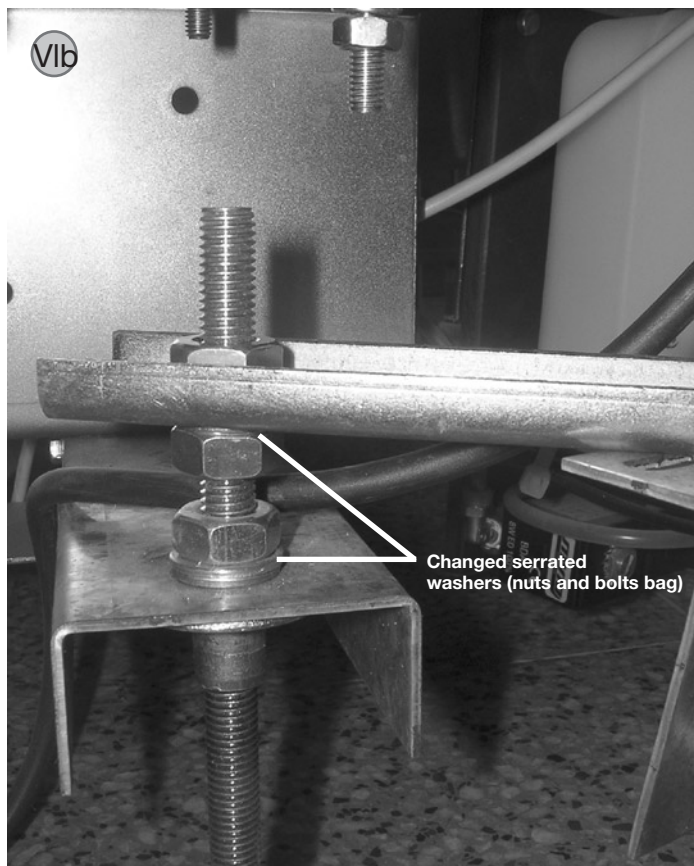
Following figures 2, 4 and 5 b, fit the unit by introducing the swivel unit of the horizontal support (D) on the threaded M10 rod of the leveling crosspiece, fastening it with two serrated washers (included with the nuts and bolts) and two nuts (E) (photos VI and VIb).

VI →



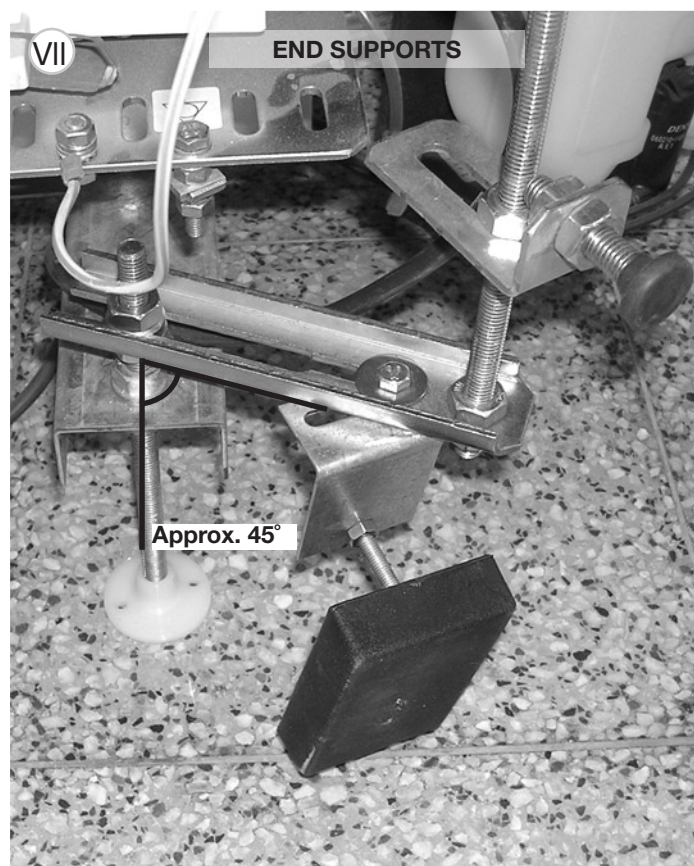
Important! Before directly fitting the swivel piece (C) to the threaded (M10) rod, fit the upper end of the unit (figure 2), adjusting the threaded rod (G) so that it is tight against the inside edge of the tub, together with the upper support and its support plate (F). This can be achieved easily by turning the rod (G). Fasten the nuts (H) and the nuts (E) after changing the flat washers for the serrated washers supplied with the nuts and bolts. Ensure at all times that you do not raise the tub when you fasten the nuts. The black plugs must be parallel to the lower curve of the panel, to support the panel, turn the support unit towards it (see photos VI and VIb).

VIb →



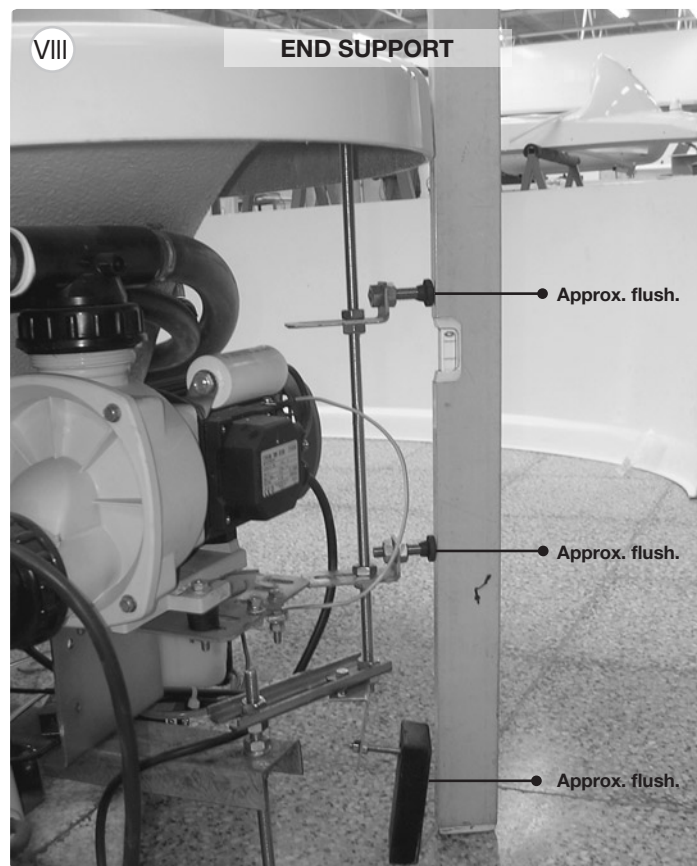
The support shall be seated approximately 45° in relation to the bathtub leg (see photo VII).

VII →



The lower plug shall be approximately level with the edge of the tub, together with the support bases (see photo VIII).

VIII →



4. ASSEMBLING THE FIRST PANEL

Position the panel (see photo IX).

IX →



Mark the position of the hole in the panel with regard to the left and right end plugs.

Important!

It is only necessary to drill holes in the ends of the panel, not in the centre (see figures 7 and 8).

Drill the panel in the place you have marked and at approximately 60 mm above the floor (see photo XII).

XII →

If two panels are to be fitted, ensure that the holes (R) are at least 40 mm from the edge of the panel so that the seal (X) can be fitted easily (figure 8).

Carefully clean the inside surface of the panel with alcohol before gluing the Velcro in place (V).

Position the panel and remove the adhesive protectors from the Velcro (V).

Position the panel again putting the upper end below the edge of the tub and ensuring that the springs (photo V) are inside the edge of the panel so that they can work correctly.

Bend the panel for it to fit into place under the edge of the bathtub. The flexible nature of the panel means this can be done without damage or permanent deformation to the panel (see figures 6.2 and 6.3).

Start fitting it in position at the left end and place it below the edge of the tub. When you get to each Velcro fastening (V), check that it is free.

Once the panel is in place, fasten the Velcro (V), by pressing on the area where they are located. Fit the washers, screws and covers shown in figure 5b in the holes at the ends. Said screws, **must** be fitted if the tub is installed with a hydromassage.

If the second panel is not to be fitted, finish tiling the walls.

5. ASSEMBLING THE SECOND PANEL

To assemble the supports, proceed as indicated for the first panel (points 3.1 and 3.2).

Before fitting the second panel, position the supplied chrome trim section joints (X), as indicated in figure 7, in the ends of the first panel. Place the section on the first panel beginning at the top (see photos XIII, XIV).

XIII →

XIV →



As indicated previously in section 4, place the second panel over the other end of the joint section (X) on the first panel installed, as shown in figure 8. If necessary, for one panel to fit better on to the other, remove the joint section and put it back when the second panel is in position. For a better finish, fit the profile (X) flush to the lower part of the panel.



Roca S.R.L.

Via Leonardo da Vinci, 24
20080 Casarile (Milano)
Italia
Tel. +39.02.900.251
Fax.+39.02.905.21.74

Roca GmbH

Feincheswiese 17
56424 Staudt
Deutschland
Tel. +49.(0)2602.93610
Fax.+49.(0)2602.936.122

Roca Cerâmica e Comercio, S.A.

Serviços Comerciais
Rua José Duarte Lexim, Lote 6
2675-393 Odivelas Codex
Apartado de Correios 16
2676-901 Odivelas Codex
Portugal
Tel. +351.21.937.94.30
Fax.+351.21.937.94.31

Roca Polska Sp. z o. o.

ul. Wyczolkowskiego 20,
44-109 Gliwice
Polska
Tel. +48.(0)32 339 41 00
Fax.+48.(0)32 339 41 01

Roca Argentina S.A

Camino General Belgrano, 2873
1824 - Lanús Este
Buenos Aires
Argentina
Tel. +54.(0)114.230.96.39
Fax:+54.(0)114.246.95.56

Roca Limited

Samson Road
Hermitage Ind. Estate
Coalville, Leics. LE67 3FP
United Kingdom
Tel. +44.(0)1530.83.00.80
Fax.+44.(0)1530.83.00.10

Roca S.A.R.L.

BP 90422
95005 Cergy Pontoise Cedex
France
Tél. +33.(0)1.34.40.39.00
Fax.+33.(0)130.37.02.65
+33.(0)134.64.13.55

ROCA Maroc, S.A.

Route de Marrakech, km 2.5
B. P. 571 - 26000 - Settati
Maroc
Telf : +212.(0)23.40.59.41
+212.(0)23.40.03.39
Fax : +212.(0)23.40.59.42

Kalevit Roca Saniter Seramik Sanayi, A.S.

Büyükdere Cad.
Kaleseramik Binasi
80620 Levent – Istanbul
Turkey
Tel. +90.212.270.70.00
Fax.+90.212.268.68.89

Roca Sanitario, S.A.

Av. Diagonal, 513
08029 Barcelona
Spain
Tel. 93.366.12.00
Fax 93.405.27.73

