

# User's Manual

Integrated Automatic Soap Dispenser &Faucet

8906SZA



■ Please read this manual carefully before using and retain it for future reference

## ⚠ Caution before using

- 1.Please read this manual carefully before using and keep it for further reference
- 2.To keep the sensor window clean,please wipe it with a soft cloth dipped in a neutral detergent.  
Do not wipe it with a rough cloth to avoid induction failure or product damage.
- 3.Don't flush the electronic sensor by water
- 4.Avoid sunlight or other light to be reflected to sensor window or enter into the sensor window directly
- 5.Do not install the soap dispenser at the place be with of strong electromagnetic interference

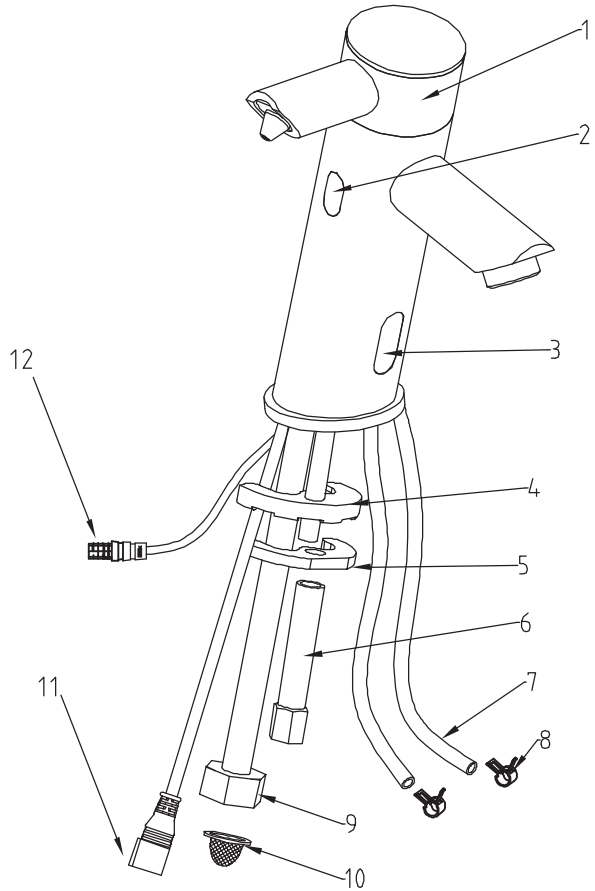
## Packing List

NO.	Part name	QTY	Remark
1	Faucet body assembly	1set	sensor included
2	Control box assembly	1set	
3	AC adaptor	1set	
4	Soap bottle	1pc	1500ml(Standard)
5	Accessories pack	1pc	2 anchors,2 screws
6	User's manual	1pc	
7	Remote control	1pc	2pcs of AAA batteries included

## Main Parameters

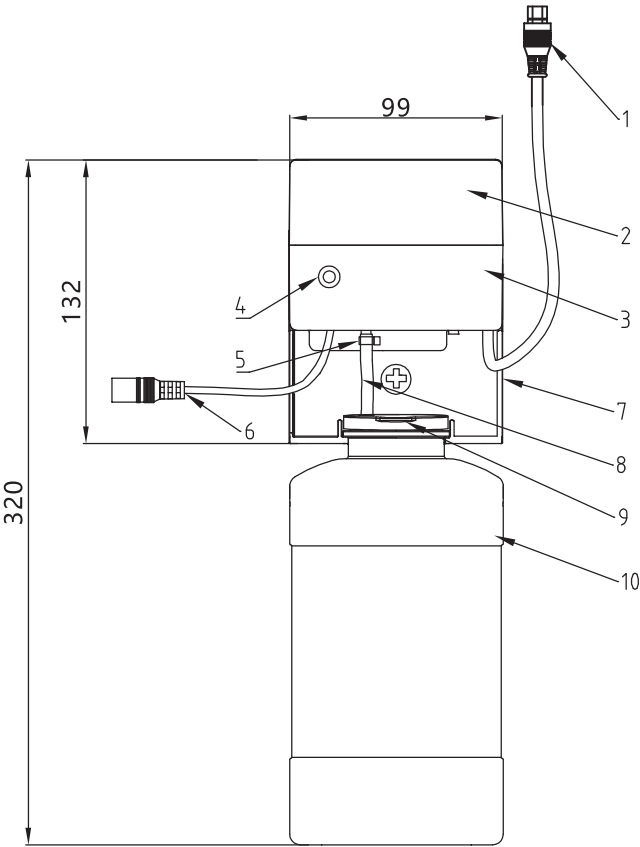
Power Supply	AC110 ~ 240V 50 ~ 60Hz /DC6V
Liquid Volume (soap dispenser)	1500ML
Suplly volume per drop (soap dispenser)	2-10ml,factory set:2ml(liquid type)
	4-30ml,factory set:4ml(foam type)
Detecting distance (soap dispenser)	10-20cm adjustable,factory set distance:10cm±1cm
Detecting distance (Faucet)	8-20cm adjustable,factory set distance:17cm±1cm
Applicable water pressure (Faucet)	0.05Mpa(Dynamic Pressure)-0.7Mpa(Hydrostatic pressure)
Watersupplying caliber (Faucet)	G1/2
Water yield(Faucet)	13.5±1L/min(Dynamic Pressure0.3Mpa Accept Customized)
Water temperature(Faucet)	1 -60°C
Ambient temperature	1 -55°C

**Faucet body assembly diagram**



NO.	Part name	NO.	Part name
1	Faucet Body	7	PU Hose
2	Soap Dispenser Sensor Control	8	Clamps
3	Faucet Sensor Control	9	Flexible Pipe
4	Rubber Gasket	10	Filter Screen
5	Fixed Gasket	11	Soap Dispenser Connector (PIN)
6	Fixing Nut	12	Faucet Power Line

**Control box assembly diagram**



NO.	Part name	NO.	Part name
1	Sensor cable(female)	6	Power cable
2	Control box cover	7	Fixed frame
3	Control box base	8	Suction hose
4	Button to release air	9	Bottle cap
5	Hose cilp	10	Soap bottle

## Features

- 1.The soap dispenser can be widely used in the public wash room,easy to use
- 2.Infrared sensor technology be used,soap flows automatically when hands are put within range of the sensor
- 3.The soap rate and the induction distance can be adjusted by remote control
- 4.MCU control chip be used,low power consumption,stable and reliable
- 5.Peristaltic pump and micro air pump be used,excellent results
- 6.Nice faucet shape,long service life

## Installation guide

- 1.Prepare necessary tools before installation:hole maker,drill,Screw driver,spanner
- 2.Drill a  $\Phi 35\text{-}\Phi 45$  mm hole on the counter as per figure 1, remove the nut and tapered gasket pass through the fixing rod cables and PU hose from the installation hole,put the spout body on right position,install the tapered gasket and nut.
- 3.As per figure 2,put a clip on the suction hose,and connect it with the suction of control box then fix it.Same way to do the other 2 PU hoses.
- 4.Use the screw fixing the frame on the wall in the appropriate position of the platform, make the right position of the fixed frame.
- 5.As per figure 3 open the angle valve of water inlet remove impurities from pipes,close the angle valve put the strainer on the hose connector as pre figure3,then connect the flexible hose with the inlet aple valve and open the angle valve
- 6.As per figure 2,connect the adaptor and sensor,be careful the direction of cable plugs
- 7.Open the bottle cover,fill Liquid and soap according to Soap dispenser type
- 8.Pass through the suction hose from the bottle cover hole.Hang up the soap bottle on the frame
- 9.The user can shorten the length to the best length as conditions require.

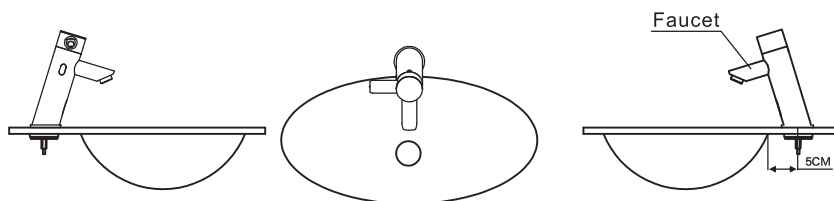


Figure 1

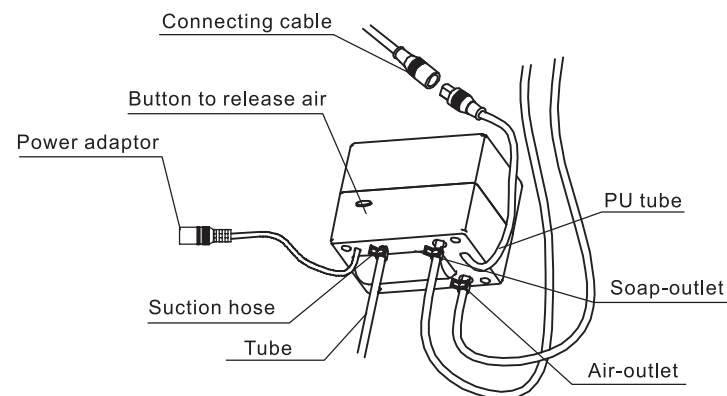


Figure 2

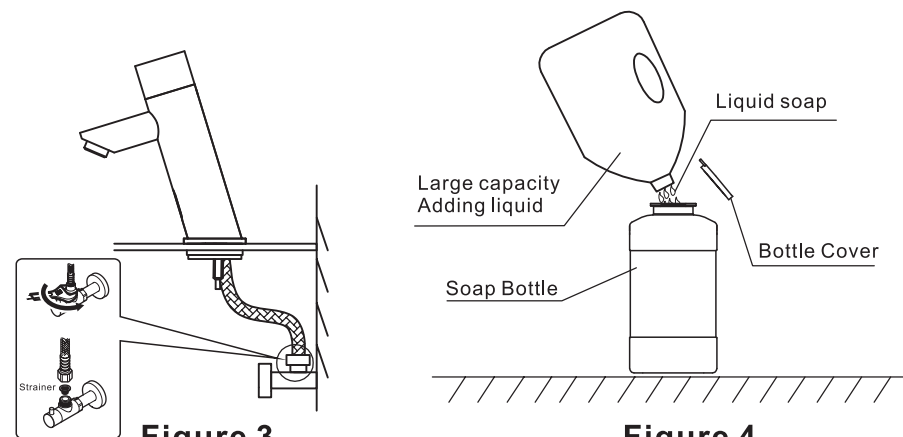


Figure 3

Figure 4

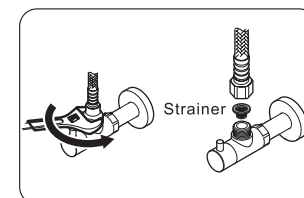
## Clean of the strainer

The following condition require to clean the strainer

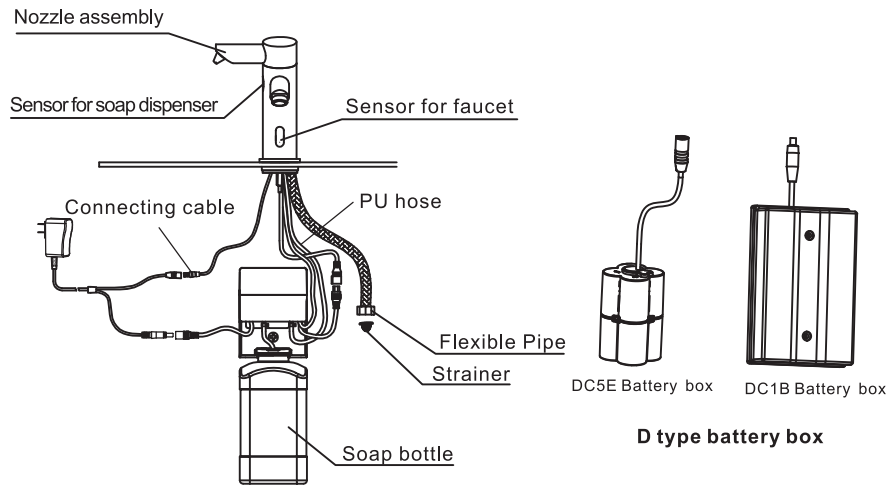
- 1.Every 6months
- 2.The flow gradually decreased during using

## Operating steps:

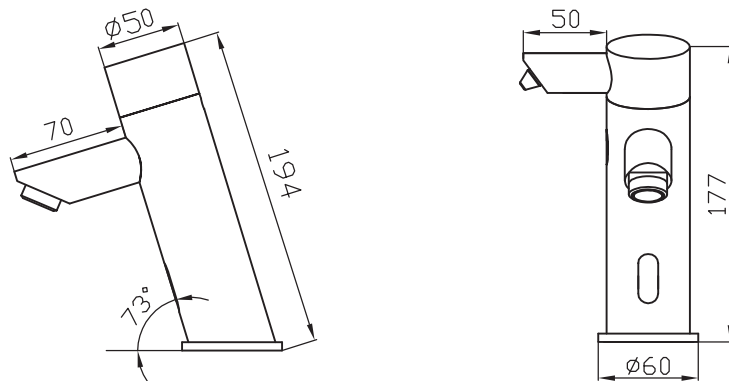
- 1.Close the supply stops and unscrew the flexible hose and take off the filter as per figure shows.
- 2.Use soft brush and water to clean the dirty and fix it back as before open the supply stops.



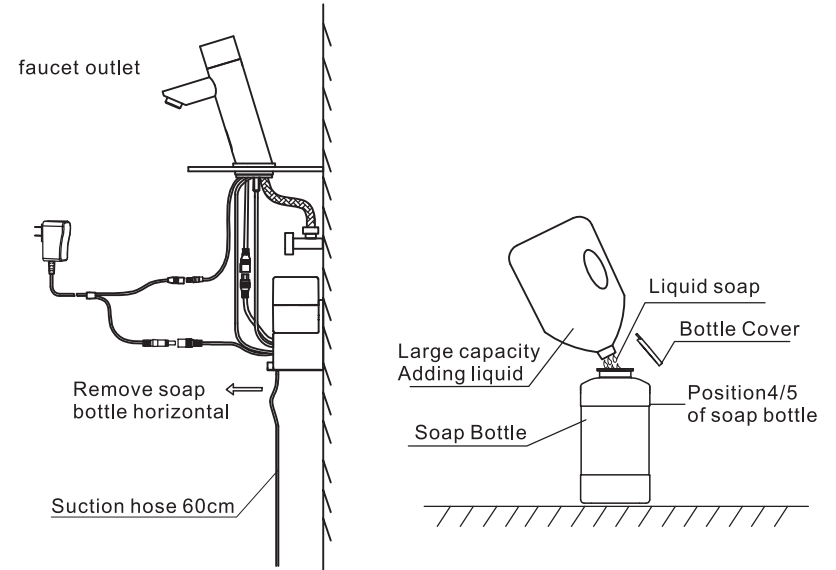
## Installation diagram



## Dimensional drawing



## How to fill soap



Note: the silicon tube can be cut to the best length

1. As per figure 5, raise up the soap bottle and remove it from the fixed frame, pull out the hose and open the bottle cover.
2. Fill Liquid and foam soap according to soap dispenser type after filling the soap, cover the bottle and insert the hose as figure 6. Put back the bottle to frame

### Note:

1. user can use large capacity appliances with soap liquid and put it on the ground directly
2. This product foam type is suitable for foam soap and liquid soap type is suit for liquid soap these two type soap can not mixed use.

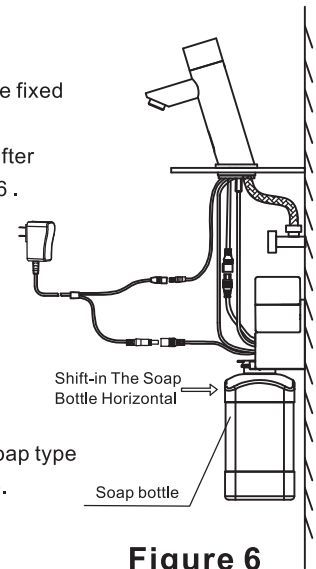
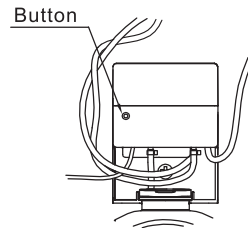


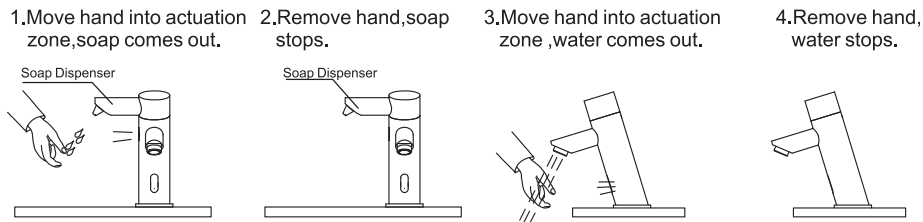
Figure 6

## Instructions

On first use, push the button to release air till soap comes out from spout



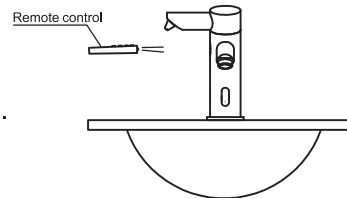
**Figure A**



## Adjust soap volume

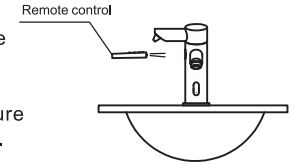
The soap volume be adjusted by remote control. Factory set it at 2ml for soap model  
If you like to readjust, do the following:

1. Take the remote control point to the sensor of soap dispenser.
2. Please find the button "Time +" ; press one time , can increase 0.5 Second (set range 1~6S) ; If it reach the maximum , indicator lamps flash 3 times per one second.
3. Please find the button "Time -" ; press one time , can increase 0.5 Second (set range 1~6S) ; If it reach the minimum , indicator lamps flash 3 times per one second.
4. If you need to restore factory default , please press "Reset" button, the indicator lamp flash 1 time.



## Adjust induce distance for soap dispenser

1. The soap dispenser is with auto-regulation actuation zone function. The product can do auto-set range adjustment . when it is energized, please be sure that the operation is handle under no reflector before sensor and also make sure there has no dirty or water droplets on the sensor window.



2. If you are unsatisfactory about the sensor distance , you can press the remote control. Please press the button "Auto adjust(distance)" of remote control. pls put your hand or white paper at the distance you want to set. Keep still the indicator short flash 1 s, the light is on 3 s, the distance finished. During the auto-regulation progress, there should be unshielded in actuation zone range of sensor. The maximum measure:  $20\text{cm} \pm 1\text{cm}$ , if still unsatisfactory about the sensor distance please repeat the above steps and then reset the actuation
3. "Reset" key function : It can restore factory default which can get the best induction distance and liquid output.

## Factory setting for the sensor control of the soap dispenser

If you want to reset the factory setting. Please take the remote control to sensor and press "Reset" key by 1 time, The setting is valid after LED signal with 1 short flash. The default induction distance:  $10 \pm 1\text{cm}$ .

Note: Keep the remote control in 30cm distance from sensor, the key is effected with LED singal flash (At this time Aim the remove control to sensor window Once the controller indicator lights flicker, then can make the next adjustment )

## Adjust induce distance for the faucet

Actuation zone of this Faucet is 8cm-20cm. Factory set distance is  $17\text{cm} \pm 1\text{cm}$

If you still unsatisfactory with the induce distance, pls adjust as follow:

When the faucet is energized, LED light is on 2s then begin to flash, the system is in the situation of auto-adjust distance.

Please put your hand or other reverberation in the position you need within 5s and please keep motionless, until the LED light is on for 1S.

Distance is locked, and auto-adjustment finished.

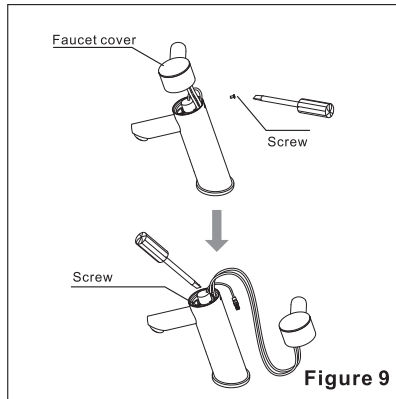
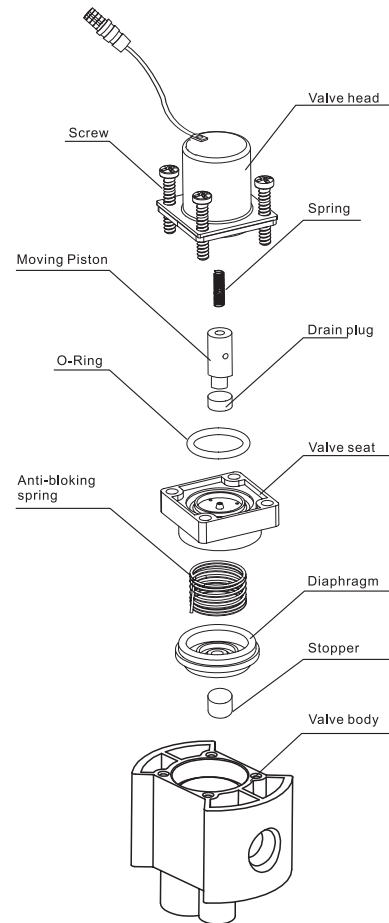
## Quality guarantee

One year's complementary service for correct usage

The following quality problems are beyond our maintenance range:

1. Problem caused by natural calamity such as fire disaster, earthquake, flood, thunderstroke etc.
2. Damage caused from incorrect usage and maintenance or used in seamy surroundings.
3. Damage from incorrect carrying, repacking, or incorrect installation.
4. Damage caused by incorrect liquid such as acid or alkali.
5. Can't show maintenance card or have not record in it or alter purchase date, customer name, of sales shopping etc.

## Clean The Solenoid Valve



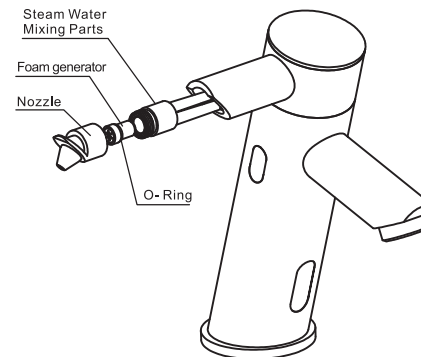
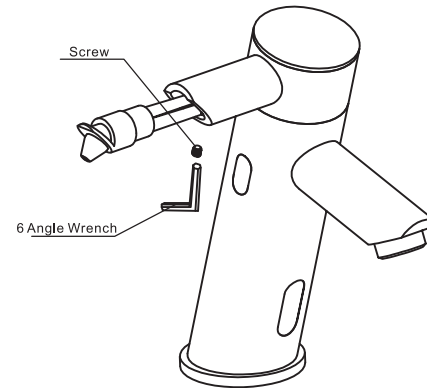
1. Close the inlet valves, Unscrew the fixed nut and take the faucet cover out
2. As picture 9 shown, Unscrew four valve head lock screws, take off the solenoid valve head and then Take out the rubber diaphragm and frame. Clean the hole of the frame.
3. Check the drain plug on moving piston and make sure whether it is normal
4. Check whether there is rubbish in the seat and clean it.
5. After cleaning, fix the solenoid valve into faucet by reversing step
6. Cover the faucet tap fix with screw and then Open the inlet valves

### WARNING



Turn off the power if the product use AC model. Don't miss the moving piston and the small spring.

## Foam generator cleaning



1. Use the 2MM six angle wrench to turn the fastening screws out and pull the nozzle out of the tap.
2. Open the nozzle and remove the foam generator from the air-water mixture. Rinse the nylon filter on both sides with clean water. Rinse off the impurities in the soap. Be careful not to pierce the screen with sharp tools.
3. After flushing, install the foam generator back into the air-water mixer. Be careful not to lose the O-ring on the foam generator. Turn the nozzle into the air-water mixer.
4. Install the entire sprinkler head in the top cover of the faucet and tighten the fastening screws with the 2MM six angle wrench.

## Faucet Trouble And Maintenance

Phenomenon	Failure Cause	Solution
The indicator always blink when the faucet is working	Sensor failure	Change the sensor
	Power not stable	Check the battery/power adapter
	Sensor distance short	Adjust Sensor distance
	Connection off	Check the connection
Indicator blink all the time	Sensor distance too far(slow blink)	Adjust distance
	Obstacle before sensor window(slow blink)	Remove obstacle
Doesn't flush water	Impurity in valve	Clean valve
	Pipe blocked	Clean pipe
	Valve connection off	Check connection
	The small hole on diaphragm frame is blocked	Clean frame and hole
Running water	Connection for solenoid valve don't work	Reconnect it
	Dopant in valve、Hole of rubber be blocked	Clean the valve and hole
	Valve head doesn't work	Change valve head
Small water flow after closing	Impurity in valve	Clean the valve
Flow of water is small	Pipe is blocked	Clean the pipe
	Filter is blocked	Clean the filter



Caution

- 1.If the water flow is not stopped, please close the inlet angle valve and contact the service staff or head office.  
We will serve you in time.
- 2.Please clean the filter regularly according to the water quality, avoid block up.

## Fault and maintenance of soap dispenser

Problem	Failure case	Treatment
No soap out	Power not stable Sensor failure	Check the battery/power adapter
	Sensor damage	Contact seller Change the sensor
	Peristaltic pump damage	Changed the Peristaltic pump
Small amount of liquid	Insufficient soap in soap bottle	Add soap liquid
	The nozzle is blocked	Cleaning nozzle components
	Unreasonable adjustment of liquid output	Use remote control to adjust liquid output
Automatic outflow soap when no body use	Induction distance is set too long to induct the platform	Using remote control to shorten the induction distance
	The installation is not correct There are foreign bodies in the induction range.	Reinstall according to installation instructions